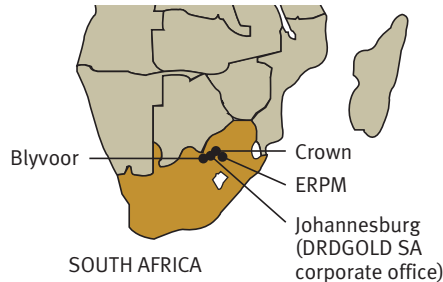


► **ABOUT DRDGOLD SA**

DRDGOLD South African Operations (Pty) Limited (DRDGOLD SA) is a medium-sized gold producer, jointly owned by DRDGOLD Limited and its Black Economic Empowerment (BEE) partner, Khumo Gold SPV (Pty) Limited (Khumo Gold), with respective holdings of 74% and 20%. The balance of 6% has been reserved as the foundation for an employee trust. DRDGOLD SA wholly owns and operates Blyvooruitzicht Gold Mining Company Limited (Blyvoor), East Rand Proprietary Mines Limited (ERPM) and Crown Gold Recoveries (Pty) Limited (Crown).



DRDGOLD SA was formed in 2005 as a vehicle to both consolidate DRDGOLD Limited's South African operations and provide a platform for further growth across the African continent. Compliance with the Mining Charter's 10-year target for BEE equity participation has been met by Khumo Gold's 20% holding and the 6% reserved for an employee trust.

► **BLYVOORUITZICHT**

**Underground mining**

At present mining is concentrated on Nos 4, 5 and 6 Shafts. From Q3 of 2006, implementation of a new mine plan began as a response to increasing seismicity and consequent safety concerns. In terms of this plan, mining volumes from the seismically active, high-grade No 5 Shaft area are being reduced and simultaneously increased from the lower grade Nos 4 and 6 Shaft areas.

The No 2 Sub-shaft Project – to access reserves in the No 2 Sub-shaft area – was placed on review during 2006 and is currently being re-scoped as the Way Ahead Project (WAP). In terms of WAP, access to both No 2 Sub-shaft reserves and additional reserves in the so-called South West Block is envisaged from levels 27-35 of the No 5 Shaft, at substantially lower capital cost than the original No 2 Sub-shaft Project.

**Surface retreatment**

Blyvoor also treats slimes dams and waste rock dumps through its 400 000 tonnes per month (tpm) gold plant to recover gold. The mine's Slimes Retreatment Project was recently expanded to 300 000 tpm and a further 100 000 tpm expansion is envisaged at an estimated capital cost of R10-15m.

**Safety**

Blyvoor has a distinguished track record in the safety field. It has won the West Rand Mine Managers' Association Safety Competition for nine years in succession and was recently awarded the Minister of Minerals and Energy's Safety Flag award in the ultra-deep gold and platinum category for a 33% improvement in its disabling injury frequency rate (DIFR) over the past three years.

► **ABOUT BLYVOOR**

**Location:**

Blyvoor is situated on the north-western edge of the Witwatersrand Basin, south of Carletonville

**Comprises:**

Underground mining operation, surface retreatment operation and a gold plant

**Production:**

Approximately 166 000 ounces of gold per year

**Current life-of-mine:**

2025

**Number of employees:**

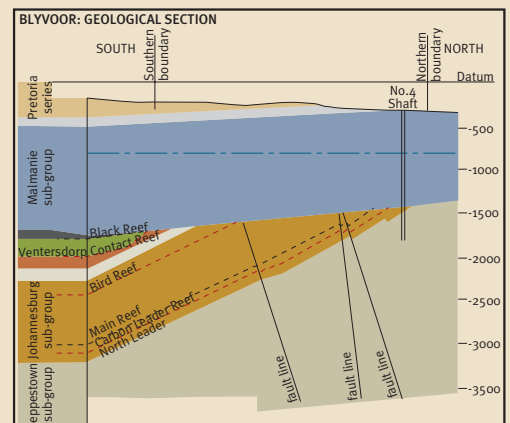
4 520, including contractors

**Background:**

Blyvoor was established in 1937 as the first mine on the West Wits line, with production beginning in 1942. DRDGOLD SA acquired the mine in 1997.

**Geology:**

Blyvoor has two main gold-bearing horizons: the Carbon Leader Reef (CLR), which is one of the principal orebodies in the Carletonville goldfield; and the Main Reef, which is some 75 metres above the CLR horizon.



► **OPERATIONAL REVIEW**

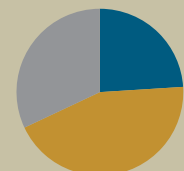
DRDGOLD SA produced 178 661 ounces of gold in the six months to December 2006, an increase of 1% on the six months to June 2006 and a 28% increase on the six months to December 2005. Cash operating costs across the operations remained steady over the period at US\$504 per ounce, compared with US\$509 per ounce in the previous six-month period to June 2006.

Blyvoor produced 79 348 ounces of gold in the six months to December 2006, a 4% increase on the previous six months. Cash operating costs decreased in both rand and dollar terms over the same comparative periods, with rand per kilogram costs reduced by 13% to R123 772. These improvements occurred despite an underground fire at No 5 Shaft during the last quarter.

► **DRDGOLD SA PRODUCTION OZ**

July-December 2006

- 24% ERPM
- 44% Blyvoor
- 32% Crown



## CONTACT US

**Ilja Graulich**

Group Strategic Development Officer

E-mail: [ilja.graulich@za.drdgold.com](mailto:ilja.graulich@za.drdgold.com)

Tel: +27 11 219 8700 ▶ Direct: +27 11 219 8707

Fax: +27 11 476 2637

**DRDGOLD SA**

EBSCO House 4, 299 Pendoring Avenue,

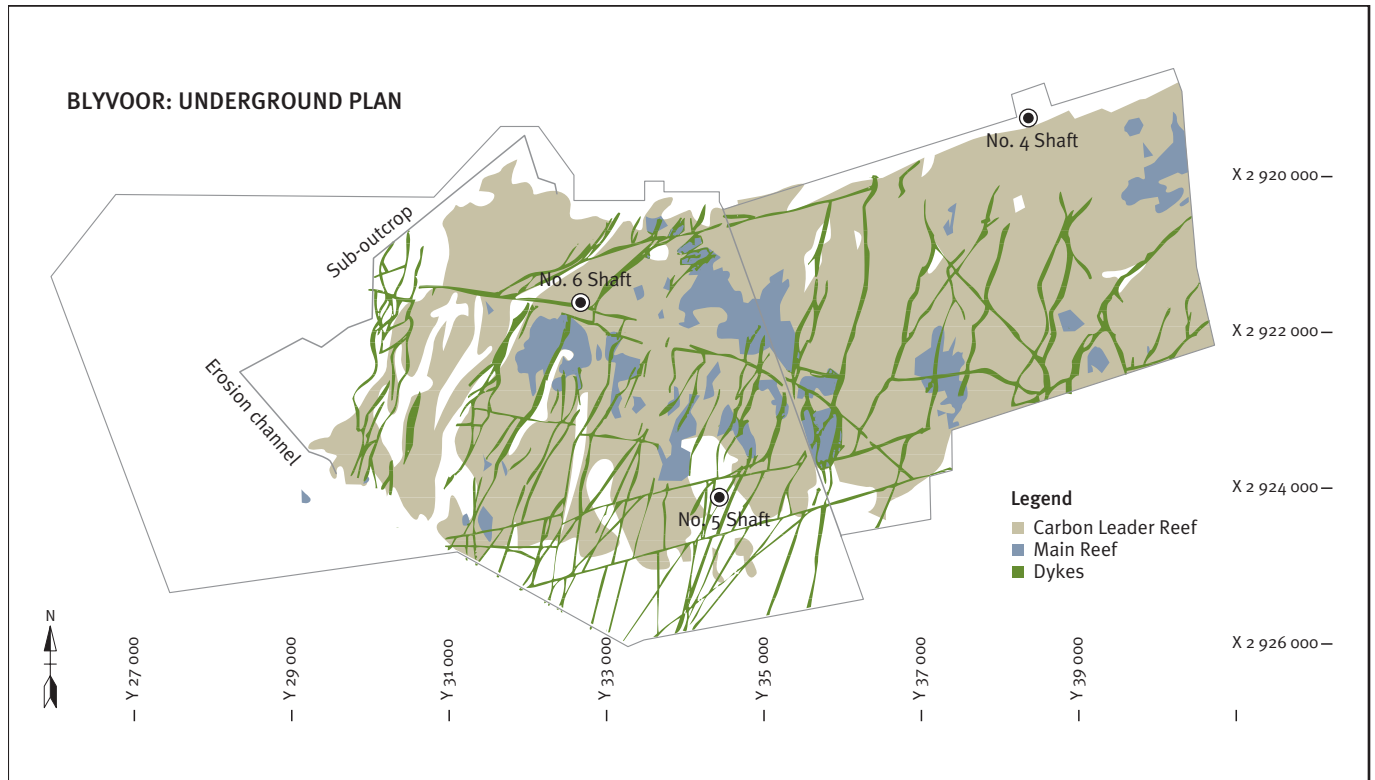
Blackheath 2195,

South Africa

Website: [www.drdgold.com](http://www.drdgold.com)

## FACT SHEET MARCH 2007

[www.drdgold.com](http://www.drdgold.com)



### Blyvoor Reserves and Resources

		Tonnes Mt	Grade g/t	Contents Gold t	Contents Gold Moz
<b>Ore Reserves at 30 June 2006</b>					
Underground	Proved	21.435	6.34	135.98	4.37
	Probable	8.122	5.45	44.27	1.42
Surface	Proved	20.514	0.59	12.04	0.38
	Probable	—	—	—	—
<b>Total</b>		<b>50.072</b>	<b>3.84</b>	<b>192.29</b>	<b>6.18</b>
<b>Mineral Resources at 30 June 2006</b>					
Underground	Measured	22.907	8.31	190.32	6.12
	Indicated	27.775	5.39	149.77	4.82
	Inferred	147.691	3.25	480.18	15.44
Surface	Measured	20.514	0.59	12.04	0.39
	Indicated	—	—	—	—
	Inferred	35.915	0.31	11.15	0.36
<b>Total</b>	Measured	43.421	4.66	202.36	6.51
	Indicated	27.775	5.39	149.77	4.82
	Inferred	183.606	2.68	491.33	15.80
<b>Total</b>		<b>254.802</b>	<b>3.31</b>	<b>843.46</b>	<b>27.12</b>

### DRDGOLD SA RESERVES AND RESOURCES

DRDGOLD SA's Mineral Resource and Ore Reserve statements were independently reviewed for the South African Code for the Reporting of Mineral Resources and Mineral Reserves (SAMREC Code) by Mr Ken Lomborg (SACNASP) and Dr Steven Rupprecht (Pr.Eng).

### Blyvoor key statistics

		6 months to 31 Dec 2006	6 months to 30 June 2006	% change
Ore milled	t'ooo	2 227	2 196	1
Yield	g/t	1.11	1.08	3
Gold produced	oz	79 348	76 389	4
Gold produced	kg	2 468	2 376	4
Cash operating costs	US\$/oz	531	538	(1)
Cash operating costs	ZAR/kg	123 772	109 517	(13)

## DISCLAIMER

Many factors could cause the actual results, performance or achievements to be materially different from any future results, performance or achievements that may be expressed or implied by such forward-looking statements, including, among others, adverse changes or uncertainties in general economic conditions in the markets we serve, a drop in the gold price, a continuing strengthening of the Rand against the Dollar, regulatory developments adverse to DRDGOLD or difficulties in maintaining necessary licenses or other governmental approvals, changes in DRDGOLD's competitive position, changes in business strategy, any major disruption in production at key facilities or adverse changes in foreign exchange rates and various other factors.

These risks include, without limitation, those described in the section entitled "Risk Factors" included in our annual report for the fiscal year ended 30 June 2006, which we filed with the United States Securities and Exchange Commission on 22 December 2006 on Form 20-F. You should not place undue reliance on these forward-looking statements, which speak only as of the date thereof. We do not undertake any obligation to publicly update or revise these forward-looking statements to reflect events or circumstances after the date of this report or to the occurrence of unanticipated events.